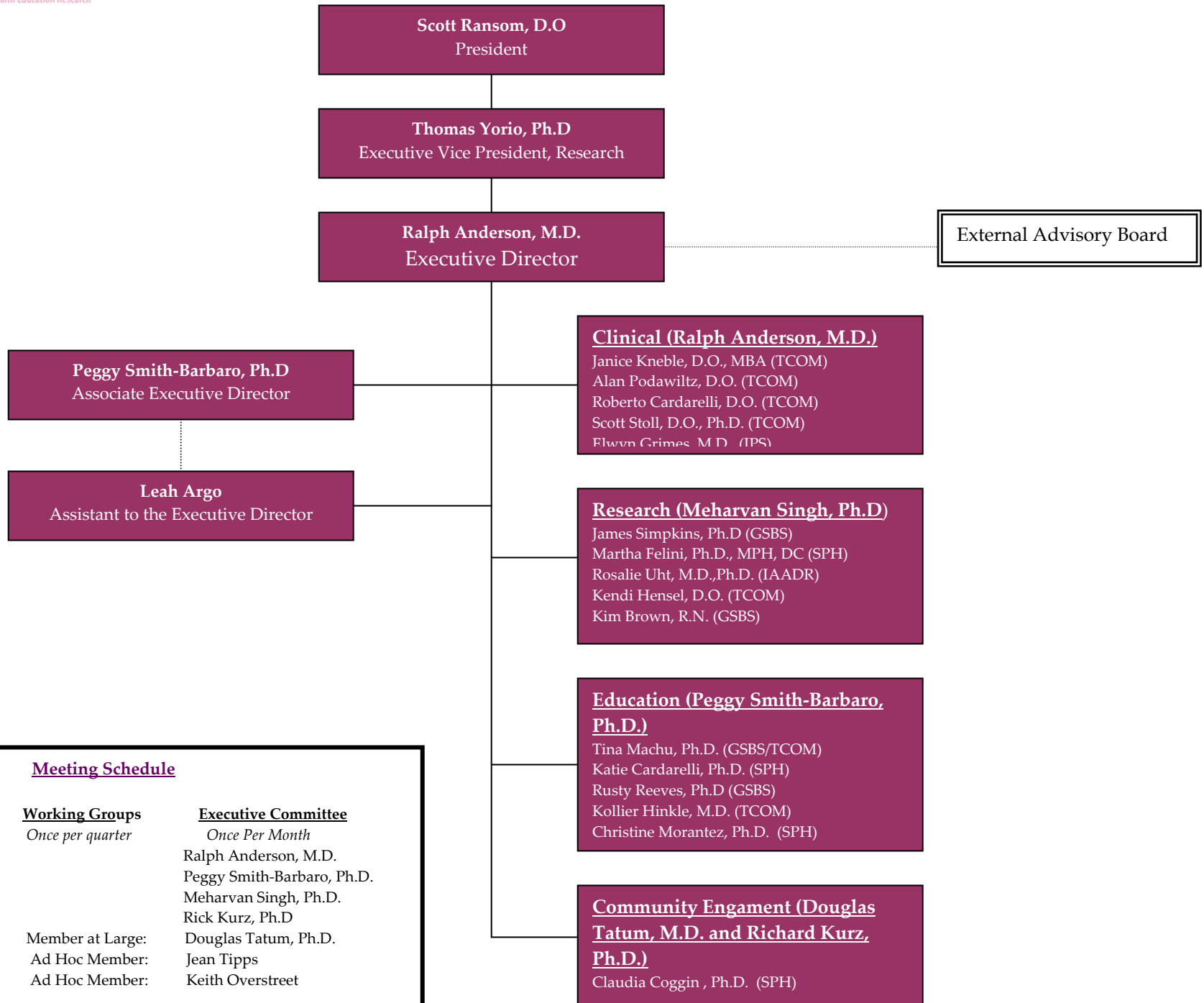


For HER Organizational Chart

Focused on her Health Education Resources



<u>Meeting Schedule</u>		
<u>External Advisory Board</u> <i>Twice Per Year</i>	<u>Working Groups</u> <i>Once per quarter</i>	<u>Executive Committee</u> <i>Once Per Month</i>
	Member at Large:	Ralph Anderson, M.D.
	Ad Hoc Member:	Peggy Smith-Barbaro, Ph.D.
	Ad Hoc Member:	Meharvan Singh, Ph.D.
		Rick Kurz, Ph.D.
		Douglas Tatum, Ph.D.
		Jean Tipps
		Keith Overstreet